

Basal cell carcinoma

Category(ies): External Disease

Contributor: William Charles Caccamise, Sr, MD

Retired Clinical Assistant Professor of Ophthalmology, University of Rochester School of Medicine and Dentistry

Dr. Caccamise has very generously shared his images of patients taken while operating during the "eye season" in rural India as well as those from his private practice during the 1960's and 1970's. Many of his images are significant for their historical perspective and for techniques and conditions seen in settings in undeveloped areas.



[Enlarge](#) [Download](#)



[Enlarge](#) [Download](#)

Figure 1: These first two photos show lesions that immediately suggests basal cell carcinoma unless proved otherwise by excisional biopsy. The pathologist's report in both of these cases was " basal cell carcinoma " The lesions in these two photos is in the most common location for a basal cell carcinoma, i.e. the sun-exposed lower lid at the medial canthal area.



Figure 2: Because of changes in the appearance of this ugly lesion, an excisional biopsy was carried out - total removal followed by pathologist's diagnosis. The diagnosis was basal cell carcinoma with no excisional edge involvement.

[Enlarge](#) [Download](#)



Figure 3: This basal cell carcinoma is in a most demanding surgical location. The chances for having complications during and after surgery are great. The surgery in this case should be performed by an accomplished and experienced oculoplastic surgeon. The photo was taken by Dr. Caccamise in 1966.

[Enlarge](#)

[Download](#)



Figure 4: This lesion had been apparent to the patient for 6 years. Excisional biopsy revealed basal cell carcinoma.

[Enlarge](#)

[Download](#)



Figure 5: The skin lesion has the typical characteristics of a basal cell carcinoma, i.e. the rolled edges with an umbilicated center. Nearby are some comedones.

[Enlarge](#)

[Download](#)

Basal Cell Carcinoma, right lower lid

Category(ies): Oculoplastics

Contributor: David W Hayes, DO US Military Flight Surgeon



Figure 6: Example of severe Basal Cell carcinoma with destruction of the entire right lower lid in a 61-year-old Afghani Male

[Enlarge](#)

[Download](#)



Figure 7: Note the exposed bulbar conjunctiva and local destruction of tissue (reference Dr. O'Malley's case of a much smaller basal cell carcinoma in the lower lid and the surgical reconstruction plan).

[Enlarge](#)

[Download](#)

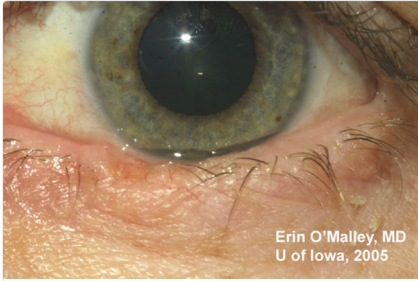
Image Permissions:



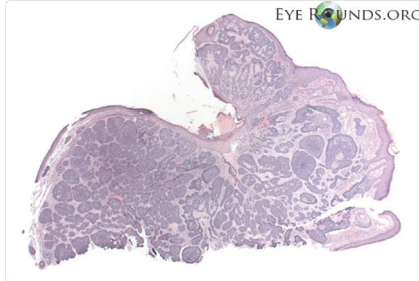
Ophthalmic Atlas Images by [EyeRounds.org](#), [The University of Iowa](#) are licensed under a [Creative Commons Attribution-NonCommercial-NoDerivs 3.0 Unported License](#).



Related Articles



[Related Case: Nodular Basal Cell Carcinoma](#)



[Atlas Entry: Basal cell carcinoma \(nodular type\)](#)

Address

University of Iowa
Roy J. and Lucille A. Carver College
of Medicine
Department of Ophthalmology and
Visual Sciences
200 Hawkins Drive
Iowa City, IA 52242

[Support Us](#)

Legal

Copyright © 2019 The University of
Iowa. All Rights Reserved
[Report an issue with this page](#)
[Web Privacy Policy](#) |
[Nondiscrimination Statement](#)

Related Links

[Cataract Surgery for Greenhorns](#)
[EyeTransillumination](#)
[Gonioscopy.org](#)
[Iowa Glaucoma Curriculum](#)
[Iowa Wet Lab](#)
[Patient Information](#)
[Stone Rounds](#)
[The Best Hits Bookshelf](#)

EyeRounds Social Media

Follow



Receive notification of new cases,
[sign up here](#)
[Contact Us](#)
[Submit a Suggestion](#)